

# WAT-660E (G3.8) 1/4" Miniature Camera

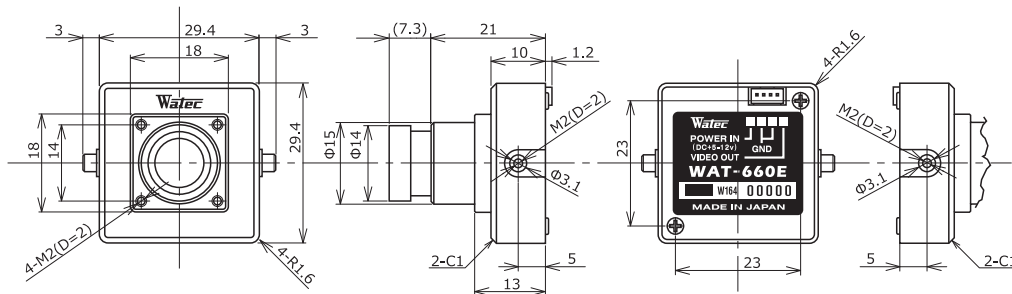
Compact square camera with built-in lens



## Key features

- Min.illumination 0.002 lx F2.0 (AGC ON=42dB, Shutter=OFF)
- Wide input voltage range (\*DC 5V to 12V)
- Various optional M12 lenses available ※Glass lenses and pinhole lens are not interchangeable

## Dimensions



## Specifications

		EIA	CCIR
Video standard			
Pick-up element		1/4 inch CMOS image sensor	
Number of effective pixels		648(H) × 488(V)	
Unit cell size		5.6μm(H) × 5.6μm(V)	
Synchronizing system		Internal	
Scanning system		Progressive	
Video output		Composite video, 1.0 V(p-p) 75Ω (Unbalanced)	
Resolution (H)		More than 480TVL (Center)	
Minimum illumination		0.002 lx F2.0 (AGC ON=42dB, Shutter=OFF)	
S/N		More than 52dB (AGC OFF=0dB, γ=1.0)	
Function settings		-	
AE mode	Fixed	-	
	EI	1/60 - 1/100000 sec.	1/50 - 1/100000 sec.
AGC	ON	0 - 42dB	
	OFF	-	
MGC		-	
Gamma characteristics		γ≒0.45	
Video level		100IRE	
Noise reduction		-	
Wide dynamic range		-	
Lens iris		-	
Back light compensation		BLC	
White blemish correction		-	
Sharpness		-	
Defog		-	
Digital zoom		-	
Privacy mask		-	
Mirror image		-	
Freeze		-	
Motion detection		-	
Neg.image		-	
Interface		4P connector (Composite Video, Power in)	
Power supply		DC+5V - 12V	
Power consumption		0.45W/90mA(DC+5V), 0.45W/37.5mA(DC+12v)	
Operating temperature		-10 - +50°C	
Storage temperature		-30 - +70°C	
Operating / Storage humidity		95% RH or less (Without condensation)	
Lens mount		M12 P=0.5	
Standard lens		3820BC-12 (f3.8 F2.0)	
Weight		Approx. 33g	
Accessories		4P cable	

Accessories
  Options

